

PM550

RUGGED ANDROID HANDHELD POWERED FOR THE WAREHOUSE

Align your enterprise mobility platforms with Android

Android has become the operating system of choice for rugged handheld terminals even in the warehouse. Leading this shift is PM550 with Android Nougat 7.1, including enterprise-tuned features such as the Enterprise Mobility Kit(EmKit) - a world proven, customized kit designed precisely for the enterprise mobility market. Receive quality system support that makes out of the box deployment extremely fast and painless, only for Android models.

A new 4.3-inch display, all with more power

Run whatever tasks you need on the new 4.3-inch touch screen with maximized visibility, which feels even bigger with no virtual keypad popping up to disturb your view. Keeping the large display on is a primary removable battery of 6,300mAh that allow your workers the full capability to get the work done. We expanded the screen and gave it more power than any competing device – the combination to enhance the productivity of your workforce.

Unshakable reliability even in the harshest conditions

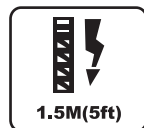
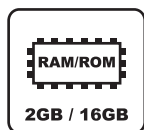
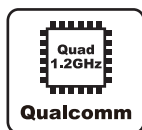
We know how tough your workplaces can get for your handheld devices, and not all survive. PM550 is a heavy-duty mobile terminal with a MIL-STD -810G for 1.5 meter(5.0ft) drop resistance and has an IP65 rating, which means it is impenetrable to water and dust, can survive numerous drops as well as shock, vibration, dramatic temperatures, and more extreme conditions. Moreover, the double-molded bumper on every edge of the device along with a Gorilla Glass 3 touch screen is an added plus, making PM550 the handheld you can count on.

Keep the momentum going with the fastest wireless connections

When you are out in the warehouse, the quality of your device's wireless connection should be the least of your worries. PM550 is one of the very few Android devices in the world that supports 802.11r with the fastest fast-secure roaming method, Cisco CCKM, to ensure seamless roaming regardless of signal channel, strength, or load. Let PM550 clear your path for business – no delay, at no cost.

Scanning performance that focuses on what's important

The standard range 1D/2D imager reads all GS1 symbologies as well as poorly printed barcodes, and extra long imager range option is also available for scanning barcodes as far as 11 meters. As a new scanning solution, the PM550 supports Extended Wedge, a feature which enables selective modification of a decoded value. There is no need for extra costs for SW development, or the excess time set aside for the sorting and collecting of data. Save your resources immensely by merely adjusting your scanning settings to capture just the data you need.



PM550

PHYSICAL CHARACTERISTICS

Dimensions

With standard batt. 204.5mm L x 79mm W x 175mm D
8.05 in. L x 3.11 in. W x 6.88 in D

Weight

586g / 20.67oz

Display

4.3", IPS panel (480 x 800 pixel) WVGA
Exceptionally bright
Daylight readable (500 nits typical)

Touch Panel

Multi-touch capacitive
Optically bonded with Corning Gorilla
glass® for strong and rugged durability

Power

Main Battery 3.63V, 6,300mAh removable
Back-up Battery 3.7V, 60mAh (Hot-Swap)

Keypad

2 Keypad options 24 Key Numeric (Shifted alpha),
(backlit keys) 51 Key Alpha Numeric

Standard Communications

High speed USB 2.0 type-C port

Notification

Top-front, bottom, touch panel dual color
LEDs for scanning and charging
Vibrator
Beeper

PERFORMANCE CHARACTERISTICS

Main-Processor

Qualcomm® APQ8016 1.2GHz Quad Core 64-bit CPU

Operating System

Google Android 7.1.2 Nougat
(CTS & GMS certified)

Memory and Storage

RAM 2GB
ROM 16GB

Sensor

Accelerometer sensor

USER ENVIRONMENT

Operating Temperature

-20°C to 60°C / -4°F to 140°F

Storage Temperature

-25°C to 70°C / -77°F to 158°F

Humidity

95% Non-condensing

Drop

Multiple 5' / 1.5m drops to concrete over
the operating temperature

Multiple 6' / 1.8m drops to concrete at
ambient temperature 73°F/23°C;
meets and exceeds MIL-STD-810G

Rain / Dust Proof (Sealing)

IP65

Tumble

500 cycles (1,000hits) at 1m / 3.3 ft

Electrostatic Discharge

±15 kV air discharge
±8 kV contact discharge

DATA CAPTURE

Integrated Barcode Reader

1D/2D Imager 1D/2D Standard symbology including
GS1 Databar

1D/2D Extra long range imager: reads
up to 11 meter (100mil Data Matrix)

Extended Wedge Edit your decode value

WIRELESS

Wireless LAN

Radio IEEE 802.11 a/b/g/n/d/h/i/k/r/v, IPv4,
IPv6, 1X1 SISO

Data Rates IEEE 802.11 a/n: Up to 150 Mbps
IEEE 802.11 b/g/n: Up to 72.2 Mbps

Operating Channels 1 to 13 (2412~2472MHz),
36 to 165 (5180~5825MHz)

Channel Bandwidth 20, 40 MHz

Security and Encryption WEP(40 or 104bit)
WPA/WPA2 Personal(TKIP, AES);
WPA/WPA2 Enterprise(TKIP/AES) -
PEAP(MSCHAPv2, GTC),
TLS, TTLS(PAP, MSCHAP, MSCHAPv2,
GTC), PWD, SIM, AKA, AKA',
FAST(MSCHAPv2, GTC), LEAP

Fast Roam PMKID Caching, Cisco CCKM, 802.11r

Wireless PAN

Bluetooth Integrated Bluetooth Class I, Ver. 4.1
Channels 0 to 78 (2402-2480MHz)
Data Rates 1, 2, 3Mbps

REGULATORY APPROVALS AND COMPLIANCE

CB, CE, FCC, IC, TELEC, IFETEL, CCC, SRRC, ANATEL, RCM, WPC,
TRC, TRA, CITC, KC, RoHS

ENTERPRISE SOLUTION

SOTI, Airwatch, Teamviewer



EmKit

Power Launcher Kiosk mode with system restriction
Allows admin to restrict operator's
access to system settings, MTP
connection and screen capture

Direct Clone Master PDA becomes a local server for
a nearby Point Mobile device to
automatically communicate and
download/restore backup files

Scan2Set Unique two-step feature for Point
Mobile Android models that enables the
fastest device deployment right out of
the box

WARRANTY

Subject to the Terms and Conditions, PM550 carries 1 (one)
year-warranty period from the date of purchase against the
defective materials and manufacturing defects.
Point Special and Premium Care service is recommended.

For the further inquiry, please contact:
service@pointmobile.co.kr

ACCESSORIES

Standard Accessories



AC/DC Power Adaptor

Country Plugs



USB Type-C Cable

Standard Battery



Hand-Strap

LCD Protection Film

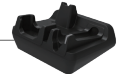


Optional Accessories



Single-Slot Cradle

Single-Slot Ethernet Cradle



6-Slot Battery Charger